

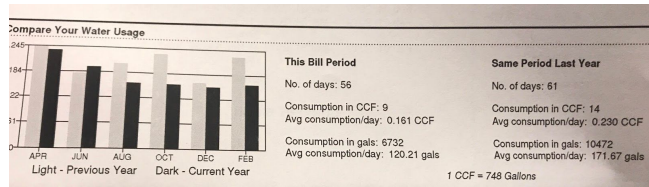
# 41 Residential Tune-Ups

Greater Seattle Area, WA

June 2018-June 2019

## Project Overview

Sage Conservation (SC) was responsible for 41 residential Tune-Ups throughout the greater Seattle area. Sinks, Showers, Toilets and Irrigation systems were optimized with Sage Certified\* devices designed to do more with less. Comprehensive behavioral data was gathered prior to each project, establishing a baseline for water usage at each location. Exhaustive data was collected via proprietary SC mobile app, WaterSage, at each fixture, calculating flow before and after tun-up. By pairing behavioral data with fixture data we were able to accurately predict the individual and collective impact of services, which were then verified with water bills.\*\*



## Water and Energy Savings

The benefit of Sage Certified tune-ups is that behavioral changes are not required in order to reap savings.

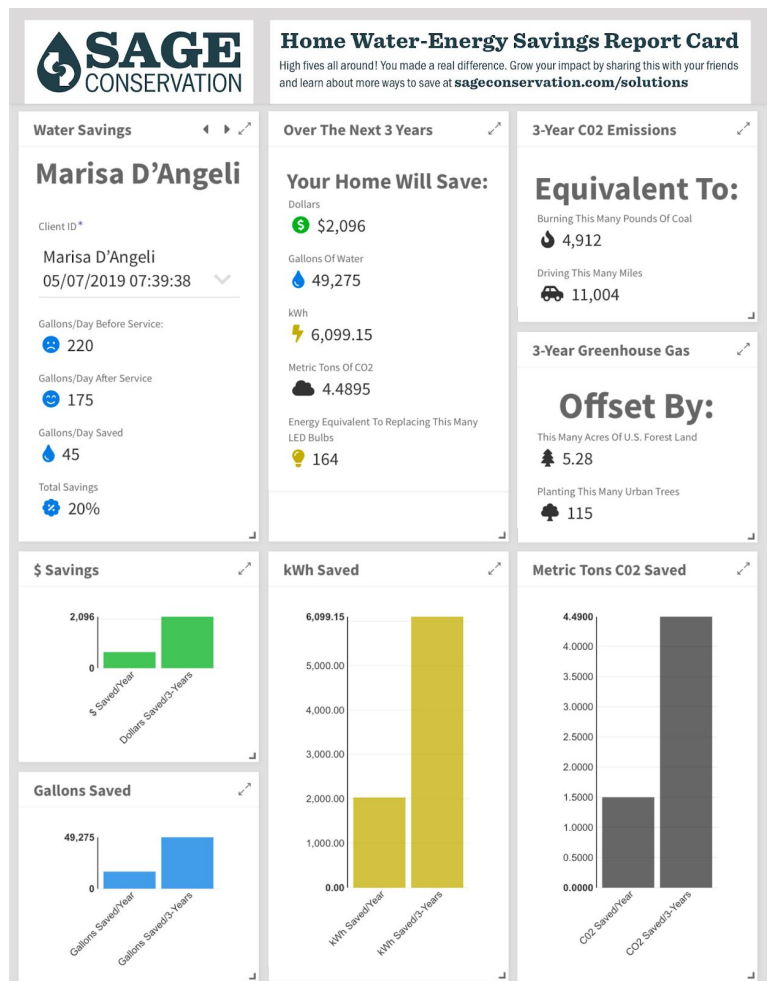
Clients each reported net positive experiences throughout their homes:

*‘Chris from this team came out and helped me save a ton of water. (47% savings) and now I’m saving a ton of money while helping the environment.’* **Jon B, Greenlake**

“We have been really happy with the transition!”

**Megan S, Columbia City**

A detailed Report Card, summarizing the data collected at homes was sent to each owner. The average water savings was 25%. Over the next 10 years, assuming changes are sustained, these tune-ups will amount to 8,117,600 gallons, 890,740 kWh and \$311,990.



\*WaterSense labelled products that increase experience while decreasing water consumption: .5gpm or lower at Bathroom Sinks, 1.2gpm or lower at Kitchen Sinks, 1.5gpm or less at Showers, 1.6gpf or lower at Tuned-Up Toilets (measured volumetrically), 1.0gpf or lower on Upgraded Toilets.

\*\*Water-SmartMeters were not cost effective at all residences. Products have been tested so that all future commercial projects can be metered.

\*\*\*

